



Features and Benefits:

- **Design custom workflows**
Combine workflow steps to create a custom workflow for a specific job or client
- **View Job Status**
View the status of all jobs in the system
- **Re-output a job from the client**
No need for an operator to leave their workstation to re-output a job
- **Softproof**
Prepress operators can proof at their workstations
- **Multiple RIP and Client Support**
Support up to three RIPs and ten simultaneous prepress operators. Reduce or eliminate time wasted by operators waiting for the RIP to become available while away from their workstations
- **Modular capacity and feature options**
Purchase the capacity and features needed today, add features and capacity to meet business needs as required

Automated Prepress Workflow for Harlequin RIPs

Demands for prepress and RIP automation are on the rise. Deadlines are compressing as shops transition to an all-digital workflow eliminating much of the labor-intensive manual work of the past, but also the cushion of time built into a job. XiFlow, an automated prepress workflow solution from Xitron, helps you meet these demands while bringing control to your prepress department. A modular workflow solution that grows as your needs change, XiFlow features an intuitive icon-based user interface for designing and creating workflow steps.

Workflow steps may be chained together to provide automation. A single workflow step might be used to create a low resolution screen preview of a job for softproofing while another workflow step might create a hard copy inkjet proof. Using the Workflow Editor in XiFlow, the operator can create a workflow that produces the low resolution softproof and places the job on “hold” awaiting confirmation before the job is output on the inkjet printer for a hardcopy proof.

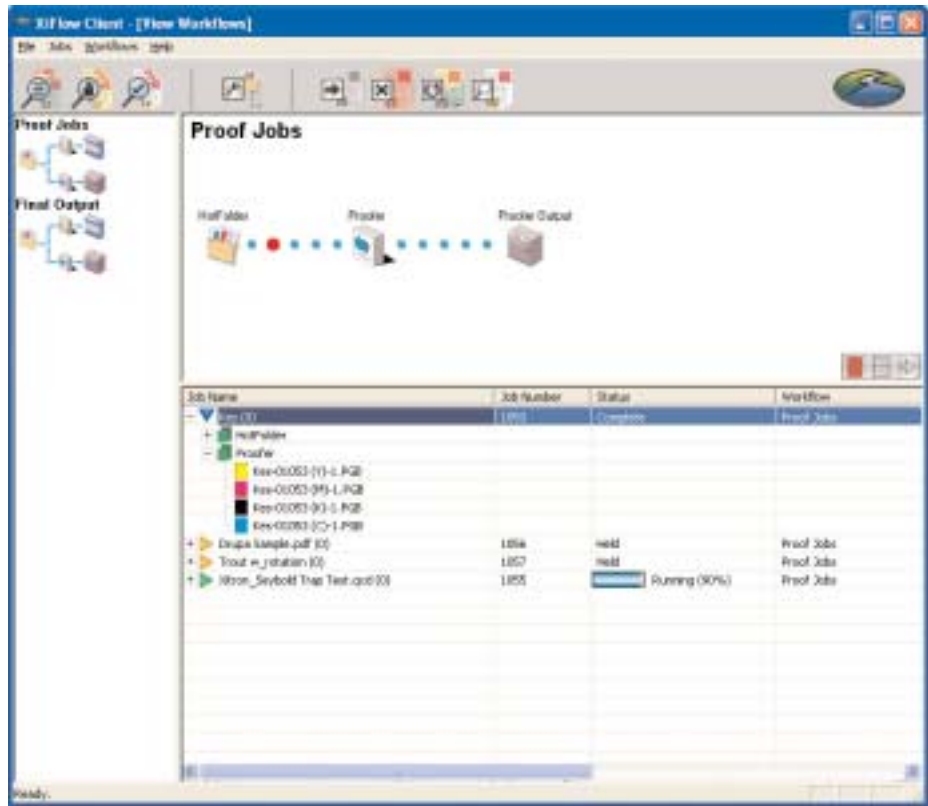
After client approval of the hardcopy proof, XiFlow releases the job for final output on the imagesetter or platesetter. Additional workflow steps may also be included by simply creating the steps and connecting them together. Customized workflows may be created for large or recurring jobs, helping to eliminate common errors that may otherwise occur when different operators work on the same job.

A complete XiFlow Workflow Solution is comprised of at least three elements: a Navigator or other Harlequin 6.0 RIP, a XiFlow Server and the XiFlow client software. The XiFlow server is a standalone PC or integrated PC with a RIP that controls all the communication of jobs from the prepress operators to the RIP. The XiFlow Client software is run on each prepress operator’s workstation and is used to create or edit workflows and manage jobs. An integrated Viewer program in the Client provides a softproof without the need for an operator to leave their workstation. The viewer offers multiple zoom setting, and also allows an operator to view traps and screening prior to final output.



The XiFlow Client also provides the operator a complete view of all jobs in the system along with their status. Jobs lists are viewable by workflow step or status such as those on “hold.” From the Client, the operator may also resend, redirect and cancel jobs from their workstations. Eliminating the need for an operator to go to the RIP can greatly enhance productivity.

XiFlow retains the original digital file, PostScript or PDF, so that the job can be sent through various steps at different times without the worry of “did I image the version the client approved?” Using the original digital file, there is no need to return to the original application to print another proof or even re-image a section for final output.



XiFlow Client Window

XiFlow v1 supports up to 3 RIPS and up to 10 simultaneous client connections. The XiFlow Server and RIPS are Windows-based, while the Client software is available for Windows 2000 Pro, Windows 2000 Server, XP Professional, Macintosh OS 9.2 and Macintosh OS X (10.2).

XiFlow offers Navigator and other Harlequin-based RIP users a modular approach to workflow. Design your own workflow solution by purchasing the features and capabilities that meet your business needs. As these needs expand, add optional modules and support without having to invest in an entirely new system.

“In order to stay competitive in the printing industry, companies continually invest in technologies that make them more productive. On an ever-expanding basis, workflow options are at the top of their wish lists. Automation in workflow becomes progressively more important for eliminating or reducing errors, but is also essential for competitive increases in productivity.”

Kevin O'Connor
Industry Workflow and Color Management Consultant



Corporate Headquarters
781 Avis Drive, Suite 200
Ann Arbor, Michigan 48108
734-913-8080
734-913-8088 (fax)
xitronsales@xitron.com
web: www.xitron.com

Xitron Offices and Distributors
Asia
Australia/New Zealand
Europe
South/Central America

Visit www.xitron.com or contact Xitron for more information

Contact your Xitron Dealer for more information.

Xitron is a registered trademark of Xitron, Inc. Harlequin is a registered trademark of Global Graphics Software. Macintosh is a registered trademark of the Apple Computer Inc. All other brand or product names are trademarks of their respective owners and are used without intention of infringement.